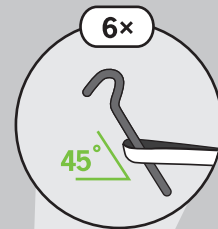
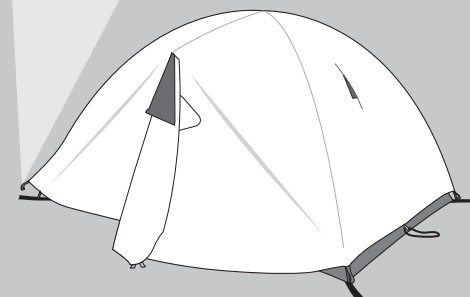
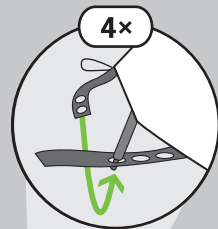
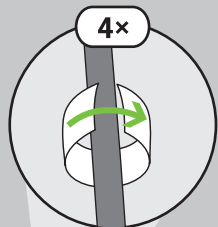
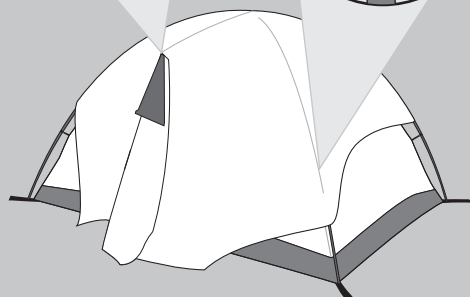
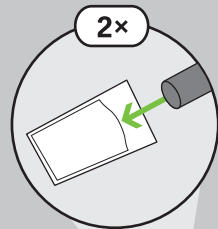
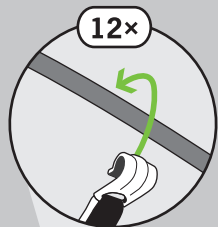
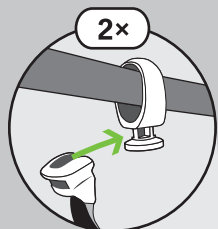
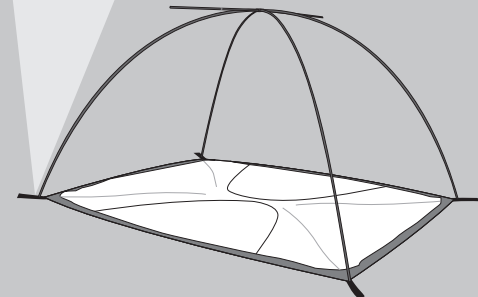
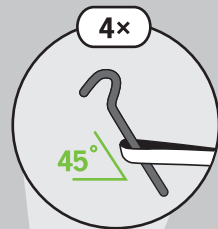
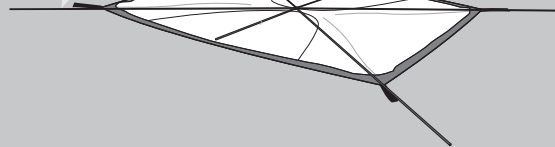
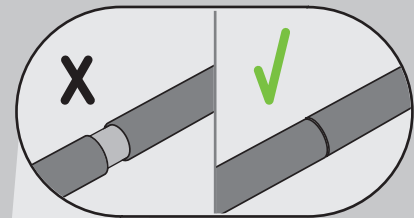
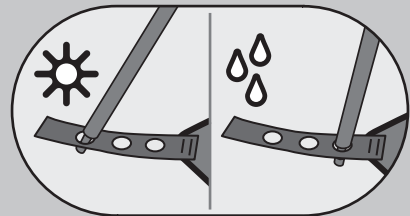
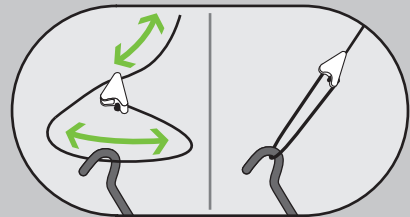


WANDERER





In severe conditions, your tent may require additional guy lines (shown in green). You can make your own or purchase them from MEC.

Additional tent care and repair information can be found at mec.ca/expertise

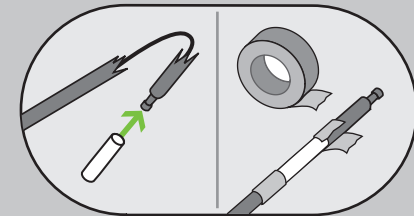



Vous risquez d'avoir besoin de cordes d'ancrage additionnelles (illustrées en vert) pour camper dans des conditions météo rigoureuses. Vous pouvez en fabriquer vous-même ou en acheter chez MEC.

Obtenez des conseils sur l'entretien et la réparation de votre tente à mec.ca/info-conseils.



Pole Repair Réparation d'arceau



 Pole repair sleeve included.
Manchon de réparation inclus.